

Kindred
SPIRITS
SPRING '25

tina givens



SPRING '25

tina givens



**KINDRED SPIRITS ARE NOT SO SCARCE AS I USED
TO THINK. IT'S SPLENDID TO FIND OUT THERE ARE
SO MANY OF THEM IN THE WORLD.**

ANNE OF GREEN GABLES

I draw inspiration from those who embrace my garments, seeing each piece as a reflection of their self-expression, freedom, and joy.

You are truly a Kindred Spirit.

With love,

tg



TINA GIVENS IS AN ARTISAN AND DESIGNER, CREATING CLOTHING THAT EMBODIES HER INNER ESSENCE. SHE PROLIFERICALLY AND METICULOUSLY ASSEMBLES ORGANIC FABRICS, UNIQUE COLOR PALETTES TELLING A STORY, AND SEWING WITH UNEXPECTED DETAILS. SHE INCORPORATES HER LOVE OF ART INTO HER PRINTS AND APPLIQUES WITH GREAT LOVE.

Welcome to Kindred Spirit for Spring 2025

CAREFREE AND SWEET

This collection draws inspiration from the beauty of nature's flowers and blooms, capturing the essence of a warm Spring season. Each piece is designed to embody a carefree and sweet spirit. The color palette offers a soft and appealing range, whether you opt for our combination of pink and feather blue with light, airy grays, or choose deep charcoal and cream for a completely different aesthetic. Whether your style leans towards sharp and pronounced or soft and romantic, the collection is crafted to cater to your preferences.

INTENSION & QUALITY

Every Tina Givens garment is meticulously created from inception with care, attention, and intention. Throughout the production process, we ensure that all our beautiful artisans involved in crafting these garments are both encouraged and supported. Our commitment to detail includes finished inside seams, impressive stitching, and the use of organic textiles. This dedication has cultivated a global following of Tina Givens collectors who cherish each piece as a sustainable work of art that embodies beauty.

COLLABORATION

Our beautiful partners who are gorgeous independent, women owned boutiques. We eagerly collaborate with them in curating a collection in selective prints and color palettes to suit their customers. They are all kindred spirits and are with me on this creative journey. It is a pleasure to witness how our pieces become a part of their and your unique story. We encourage joy and success within our ever evolving world.

YOUR ENTHUSIASM FOR MY DESIGNS IS TRULY VALUED!

tina givens



APPLIQUÉ



DETAILED APPLIQUÉ SILHOUETTES IN WOVEN CHAMBRAY FABRIC, FEATURING OVERSIZED BLOOMS AND FLOATY LEAVES. MOTION-STITCHED ONTO POPLIN COTTON GARMENTS. THESE ARE STATEMENT PIECES FOR SURE!



Cleo Tunic #2402 in cream Poplin with Charcoal
Also available in Charcoal with cream appliqué.
Shown with Syrup Slip.

See Cover Page.

RUBY Dress

#2408



RUBY is available in charcoal/
cream or cream/charcoal
appliqué.
Shown with the Juliette Pant in
pink chambray.#2410

ZOE Dress

#2408



ZOE dress is available in solid poplin with appliqué as shown. QUATRO Pant in solid cream chambray #2411

Available in all colors with appliqué as shown.

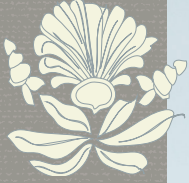


Available in solid no appliqué: Charcoal or Pink

RITA Dress

#2406

RITA Dress is a slimmer line dress with 3/4 sleeve, in poplin with optional appliqué. Shown with GRETA pant in solid cream chambray #2409. Also available in the Prints (poplin).



KINGSHIP PRINT



SUNSHINE CHARCOAL

AVAILABLE IN CHARCOAL/CREAM APPLIQUE AND CREAM/CHARCOAL APPLIQUE

QUATRO PANT

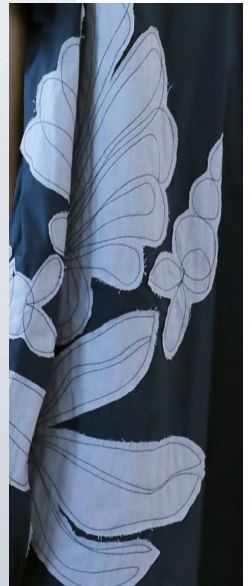
QUATRO PANT

#2411

Chambray

AVAILABLE IN CHAR-
COAL APPLIQUE,
OR CREAM WITH CHAR-
COAL APPLIQUE.

ALSO AVAILABLE
IN SOLID CREAM.





PALETTE

INSPIRATION Soft pink, cream, are anchored by deep blue charcoal. The prints balance softness with drama, featuring a striking, iconic design of oversized blooms, petals in cream and charcoal. Exclusively illustrated by Tina, these prints evoke joy, mindfulness, and a sense of personal expression.

PRINTS AVAILABLE
ILLUSTRATED BY TG FEATURING
MODERN BLOOMS FOR SPRING.

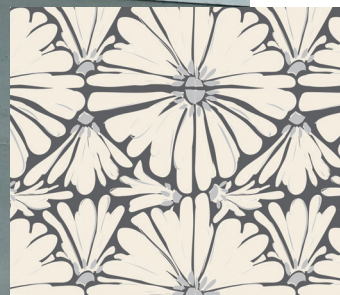
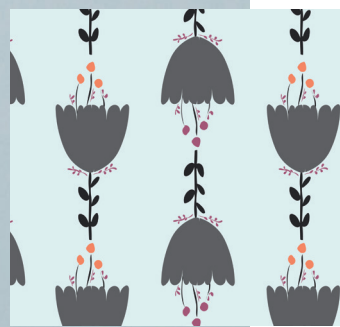
FEATURING KINGSHIP
PRINT HERE ON THE
FINN Tank Dress
#2414



AVAILABLE IN
CHARCOAL BLUE
AND THE PRINTS
LISTED BELOW

Finn #2414 Tank Dress
is available in prints shown +
solid charcoal .

Shown with the Meri Pants
#2424



KINGSHIP PRINT

SUNSHINE CHARCOAL

RUBY Dress

#2418



RUBY is available in poplin prints. Print shown here is Belview in Pink. Available Prints shown below.



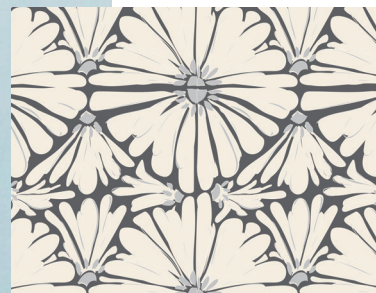
BELVIEW PINK



BELVIEW BLUE



KINGSHIP PRINT



SUNSHINE CHARCOAL



EILEEN Tunic

#2427

EILEEN Tunic

#2427



EILEEN is available in solid charcoal or the print SUNSHINE Charcoal.

Shown with:
SYRUP SLIP #2419 and the Meri Pant
#2424 in cream poplin.

TWIGGY

#2417



TWIGGY Tunic in voile print, SUNSHINE / Cream. Available in solid pale pink and charcoal blue.

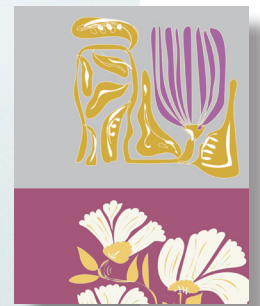
Prints available Sunshine in Charcoal or Cream.

100% cotton voile. Covered Button.

CANDACE TOP #2403



CANDACE is a sleeveless beauty, with long sides. Shown in Kingship Print, also available in charcoal blue. Shown with Juliette Pant #2410 in pink chambray.



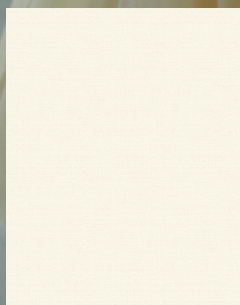
VOILE

100% Cotton

FEATHER WEIGHT COTTON VOILE
IS BEAUTIFUL ON THE SKIN, AND
FLOATS AROUND THE BODY!

DARLING DRESS#2429.

Available in Cream, Charcoal
or Sunshine Charcoal.





#2429

DARLING Dress

In featherweight voile this pretty dress feels so good on. Contrast trim with ribbon. This dress conjures sunny hot days. Lovely with one of our slips or the lightweight Meri Pant #2424.

DARLING Dress

#2429



SYRUP Slip

#2419



SYRUP #2419 in featherweight voile, available in pink, cream and charcoal blue.

ISLAND TOP

#2423

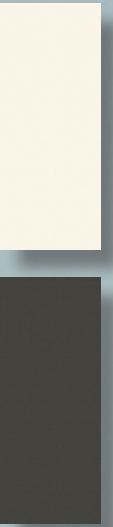
www.finaqgivens.com

Sleeveless Island Top in Poplin and Voile. Shown with the Meri Pant.

Available colors: Cream and Charcoal.
Blue sold out.

ISLAND TOP

#2423



Island Top #2423 shown with
SYRUP Slip #2419.

#2401

ARINA SHIRT

Arina Shirt/Jacket available in solid voile and in chambray for more of a jacket look. Black buttons on all colors.

Voile: creates a feather light throw-on shirt for hot days.

Chambray is cotton but feels linen like in its woven texture and softness.

Arina shown with Candace Top #2403 and Meri Pant #2424.

Below shown with Syrup Slip #2419



Chambray Cream Charcoal Blue or Pink.



Voile Cream or Charcoal Blue



JUNAH

#2430

POPLIN IS CRISP AND LIGHT-WEIGHT! A PERFECT SPRING SUMMER FABRIC. POPLIN HOLDS THE SHAPE OF THE GARMENT AND OFFERS A COOL FEEL TO THE SKIN.
Available in Prints shown.
S,M,L



SUNSHINE CHARCOAL

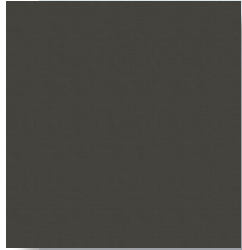
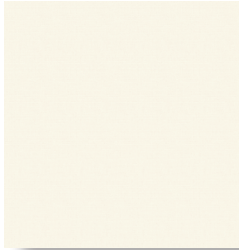


KINGSHIP PRINT



24 BELVIEW BLUE

SUGAR Ruffle Slip Dress #2421



S, M, L, XL

VOILE 100% Cotton

• PRINTS:

Sunshine Cream

• SOLIDS

Cream

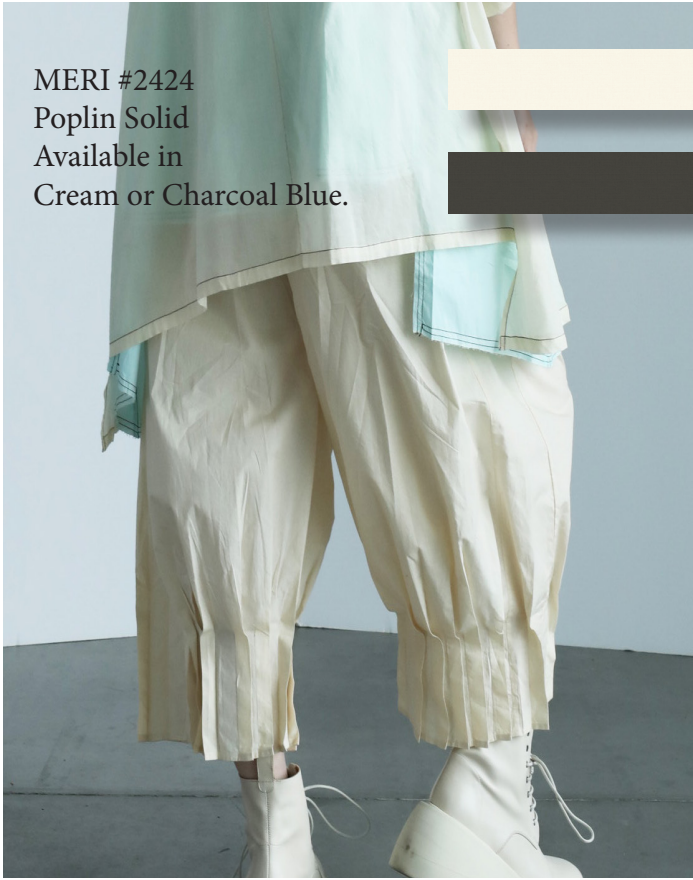
Charcoal

Body of the Sugar is made in Poplin and ruffles in Voile to make this beautiful slip dress light to wear. Gorgeous on and amazing with one of our crop tops, see Junah, or a light voile Arina.

Shown with the Meri Pant.



MERI #2424
Poplin Solid
Available in
Cream or Charcoal Blue.



PANTS

QUATRO PANT
#2411
Chambray Solid available
in cream



JULIETTE PANT
#2410
Chambray Solid
Shown in Pink.



QUATRO PANT
#2411
Chambray Solid with
appliqué.



KINDRED SPIRITS SPRING '25



ARINA #2401 Voile or Chambray / Solid



CLEO #2402 Poplin Appliqué



DARLING #2429 Voile Solid



CANDACE TOP #2403 Poplin Solid or Print



TWIGGY #2417 Voile Solid / Print



EILEEN TUNIC #2427 Voile Solid or Print





KINDRED SPIRITS SPRING '25



FINN Slip Dress #2414 Poplin Print or Solid



Island Top #2423 Poplin+Voile



JULIETTE PANT #2410 Chambray Solid



Quatro Pant #2411 with Appliqué



JUNAH CROP TOP #2430 Poplin Print or Solid



QUATRO PANT #2411 Chambray

KINDRED SPIRITS SPRING '25



RITA DRESS Poplin Print or Solid with optional appliqué



SUGAR SLIP #2421 Solid / Print



SUGAR #2421 Print/Solid



RUBY DRESS #2418 Poplin Print / or Solid with Cream/Charcoal or Charcoal/Cream



SYRUP SLIP Dress #2419 Voile Solid



ZOE DRESS #2408 Appliqué or solids



Appliqué

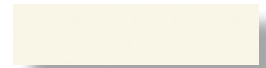
Mood Board

EYES OPEN
MIND OPEN
HEART OPEN



Black & Cream

She lives consciously as herself!



NAME	#	COLORS	FABRIC
ARINA SHIRT/JKT	2401	Cream.Charc. Pink.	Voile or Chambray
CANDACE TOP	2403	Kingship. Charcoal.	Poplin
CLEO	2402	With App. Cream. Char.	Poplin
DARLING	2429	Cream. Charc. Sun/Char.	Voile
EILEEN	2427	Charcoal. Sun/Charc.	Voile
FINN	2414	Kingship. Bel/Blue. Charc. Sun/Char	Poplin
ISLAND TOP	2423	Cream . Charcoal.	Poplin +Voile
JULIETTE PANT	2410	Cream . Pink. Charc.	Chambray
JUNAH CROP TOP	2430	Sun/Char Bel/Blue. Kingship	Poplin
MERI PANT	2424	Cream . Charcoal.	Poplin
QUATRO PANT	2411	Cream or Charcoal with App.	Chambray
QUATRO PANT Solid	2411C	Cream Solid.	Chambray
RITA	2406	Cream or Charcoal with App	Poplin
RITA PRINT	2406P	Kingship. Sunshine/Charc.	Poplin
RUBY DRESS	2418	Cream or Charcoal with App	Poplin
RUBY DRESS PRINT	2418P	Kingship. Sun.Charcoal. Bel.Pink	Poplin
SUGAR RUFFLE	2421	Cream. Charc. Sun/cream	Poplin&Voile
SYRUP SLIP	2419	Cream. Charcoal. Pink.	Voile
TWIGGY	2417	Pink. Charc. Sun/Cream	Voile
ZOE DRESS	2408	Pink/Blue/Cream/Charc +app	Poplin
ZOE DRESS SOLID	2408S	Pink . Charcoal.	Poplin



KINGSHIP



SUNSHINE CHARCOAL



SUNSHINE CREAM



BELVIEW BLUE



BELVIEW PINK

tina givens
SPRING '25

“JUST LIVING IS NOT
ENOUGH, ONE MUST HAVE
SUNSHINE, FREEDOM,
AND A LITTLE FLOWER.”
HANS CHRISTAN ANDERSON



www.tinagivens.com

© TG Studios, llc.